

SHARP

V Series

Professional Installation Projectors ideal for higher education, house of worship, corporate and museum applications

V731U/V801U



4K UHD
READY

LCD laser installation projectors extreme brightness captivates audiences in conference rooms, auditoriums and sanctuaries

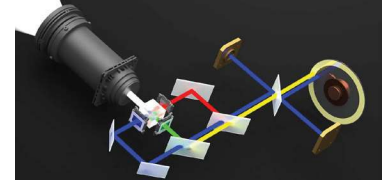
Flexible Installation

- Enjoy greater installation flexibility with motorized bayonet style lenses providing quick and easy exchanges. Lens throw distances range from 2.5 to 68.5 ft
 - New UST lens placing the projector above the screen and out of site
(installation may place the projector above the ceiling line)
- Roll-free installation capabilities make these projector ideal for almost any install environment, including portrait orientation



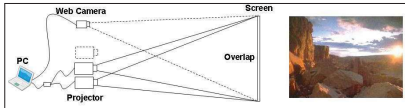
Long Lasting Laser

- Images appear immediately after power on due to instantaneous start up of the laser
- Dual blue laser systems provide best in class white balance over the life of the projector
- Inorganic optical components create longer lifetime and greater peace of mind



Stacking correction

The industry's first built-in stacking correction capabilities (up to four projectors) allows the projectors to boost an image's brightness up to 32,000 lumens, which is ideal for larger-sized screens and environments with heavy ambient light. This feature also prevents the complete loss of an image, which can happen when using only one projector.



Edge blending

This function seamlessly blends multiple projected images to display a single high-resolution image.



ProAssist™

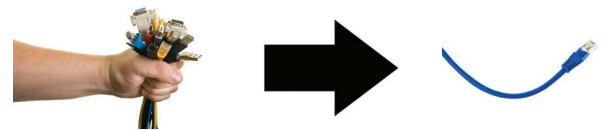
Projector management software for installation professionals provides full projector control for multiple screens to create the perfect image. Controls such as input switching, picture, lens, edge blending, uniformity and gamma control are adjustable through the GUI.

ProAssist™



Built-In HDBaseT Support

Simplify your installations with HDBaseT. Optimized for video applications and supporting uncompressed full HD digital video, audio, ethernet, and various control signals. With only a single cable (up to 100m) to run, infrastructure and labor costs are reduced, installations are significantly easier, and there is no cable clutter to manage. With uncompressed HD video support, images have never been more stunning. What's more, control signals are contained in the same cable.



Remote control

Wired and wireless backlit remote allows you to adjust for complete control of the projectors menu structure in a well lit or dark environment. Direct controls such as lamp mode, aspect ratio, volume and input selection eliminates multiple button pushes.



Cable Cover

This optional accessory creates a clean look for your installation, while hiding signal cables and the power cord.



Powerful Tools

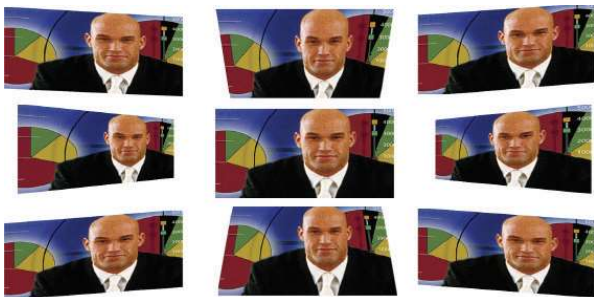
- Multi-display support with Picture by Picture/Picture in Picture
- Seamlessly blend multiple images with integrated edge blending capabilities

Filter

- 10,000-hour filter life
- Sharp is committed to designing its products to provide long lifecycles
- This virtually maintenance-free filter reduces the frequency at which cleaning is required, thereby decreasing total cost of ownership

Cornerstone

Enhanced keystone correction allows for horizontal, vertical and diagonal image correction for aligned images even when the projector is set up at an angle to the screen.



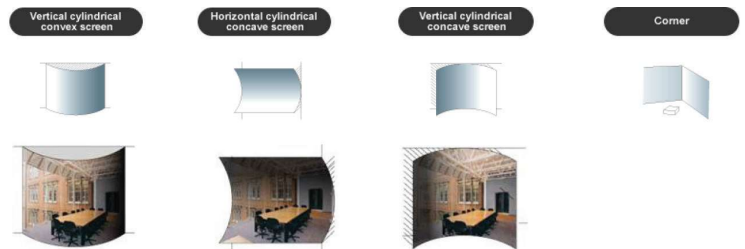
Integrated



- 4K Ready - Display stunning 4K30 content using Sharp's proprietary high performance video processing/scaling chip without the loss of critical details. HDR10 and BT.2020 signals from "Ultra HD Blu-ray" and "4K TV broadcasting" are supported on all digital inputs
- Integrated software applications such as AMX Beacon, Crestron Roomview, Extron XTP and PJ Link allow for complete control system support
- Lower the cost of your installation by eliminating the need for costly reprogramming of a control system. (supports competitors commands, call Sharp for complete list)

Geometric Correction

Projecting an image isn't confined to a standard flat screen or wall with the Sharp V Series. Geometric correction allows these models to project an image on spheres, cylinders, corner angles and many more non-standard surfaces.



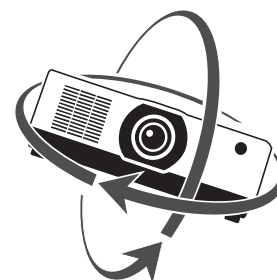
Legacy Support

Customers utilizing previous generation NEC projectors can use their existing lenses. Eliminates the costly expense of purchasing a new lens. The time consuming efforts and costs associated with reinstallation are eliminated. Supports the legacy manually adjustable lenses, NP11FL, NP12ZL, NP13ZL, NP14ZL and NP15ZL.



Roll Free

When installation requirements dictate the projector needs to be placed at different angles the V Series with Roll Free capabilities assures it is the correct projector of choice.



Unique Features

Optional short and long throw lenses available for maximum installation flexibility.

HDBaseT input provides a single connection for uncompressed full HD digital video, audio, ethernet and various control signals

Competitor command support reduces the need for reprogramming basic controls

Warranty

Registered owners receive a three (3) years or 20,000 hours (whichever comes first) parts and labor warranty including InstaCare next business day exchange.

In the Box

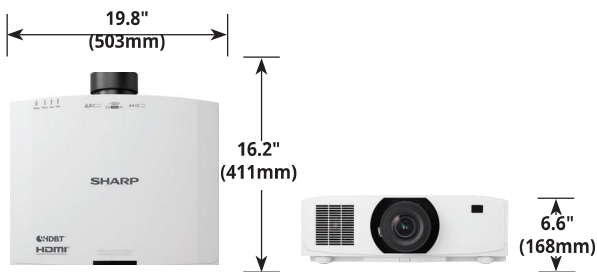
Remote control, batteries, power cord, cable cover, quick start guide, product registration card.

Accessories

RMT-PJ40	Replacement Remote Control
Optional Lenses	XP-40ZL, XP-41ZL, XP-43ZL, XP-44ML, XP-50ZL
Optional terminal Cover	XP-10CV-B, XP-10CV-W
PA600CM	Ceiling Mount
AEC006009	Adjustable Extension Column, 6" - 9"
AEC012018	Adjustable Extension Column, 12" - 18"
AEC0203	Adjustable Extension Column, 2" - 3"
AEC0305	Adjustable Extension Column, 3" - 5"
XP-01LK	Mounting Bracket for XP-44ML

Ordering Model Numbers

XP-V731U-B	XP-V801U-B
XP-V731U-W	XP-V801U-W



MODEL	XP-V731U	XP-V801U	
Display Technology	0.76" LCD		
Brightness (typical)	7300 Lumens	8000 Lumens	
Brightness (maximum)	7600 Lumens	8300 Lumens	
Resolution	Screen	WUXGA 1920x1200	
	Maximum	4K 4096 x 2160	
Aspect Ratio	16:10 (Supports 4:3, 16:9, 21:9)		
Contrast Ratio (up to)	3,000,000:1 (with Dynamic Contrast)		
Laser Life (up to)	20,000 hours		
Screen Size (diagonal)	100 to 400 in. / 2.54 to 10.16m, XP-44ML; 50 to 500 in. / 1.27 to 12.7m, XP-50ZL, XP-40ZL, XP-41ZL, XP-43ZL		
Throw Ratio	XP-44ML	0.32:1	
	XP-50ZL	0.6-0.76:1	
	XP-40ZL	0.79 - 1.11:1	
	XP-41ZL	1.30 - 3.02:1	
	NP43ZL	2.99 - 5.93:1	
Projection Distance	2.5 to 68.5 ft. / 0.74 to 20.9m		
Projection Angle	10.3 to 10.8° tele / 13.7 to 14.5° wide		
Lens	Zoom	Motorized	
	Zoom Ratio	XP-44ML	1.0x
		XP-50ZL	1.25x
		XP-40ZL	1.4x
		XP-41ZL	2.3x
		XP-43ZL	2.0x
	Focus	Motorized	
		XP-44ML	Motorized zoom / focus, F=2.0, f= 6.27, 6.8 lbs. / 3.1 kg
		XP-50ZL	Motorized zoom / focus, F=1.9 to 2.1, f= 49.7 to 99.8mm, 5.5 lbs. / 2.5 kg
		XP-40ZL	Motorized zoom / focus, F=2.0 to 2.5, f= 13.3 to 18.6mm, 3.5lbs. / 1.6 kg
XP-41ZL		Motorized zoom / focus, F=1.7 to 2.0, f= 21.8 to 49.8mm, 3.7 lbs. / 1.7 kg	
XP-43ZL	Motorized zoom / focus, F=2.2 to 2.6, f= 49.7 to 99.8mm, 3.7 lbs. / 1.7 kg		
Shift	+50/-10% Vertical, +/-20% Horizontal		
Shutter	Laser Shutter		
Keystone Correction	+/- 30° horizontal, +/- 30° vertical		
Synchronization Range	Horizontal	24-100kHz	
	Vertical	50-85Hz	
SD/HD Video Signal Compatibility	480i, 480p, 576i, 576p, 720p, 1080i, 1080p, 4K		
PC Signal Compatibility	VGA, SVGA, XGA, SXGA, SXGA+, UXGA, WUXGA, Quad HD		
Macintosh Compatibility	Yes		
Input Terminals	RGB2 (digital)	HDMI (V2.0) w/HDCP (V1.4/2.2)	
	RGB3 (digital)	HDMI (V2.0) w/HDCP (V1.4/2.2)	
	RGB4 (digital)	HDBaseT w/HDCP (V1.4/2.2)	
Output Terminals	Audio Out	Stereo Mini Jack	
External Control	RS-232, IR, DDC/CI		
Power Requirements	100-240V AC, 50/60 Hz		
Input Current	5.3A - 2.2A	6.1A - 2.5A	
Power Consumption			
(ECO off/ECO Mode/Standby/Standbyby-Power Saving)	456W / 412W / 1.7W / 0.16W	490W / 445W / 1.7W / 0.16W	
Installation Orientation	Floor/Front, Floor/Rear, Ceiling/Front, Ceiling/Rear		
Product Dimensions (WxDxH)	19.8 x 6.6 x 16.2 in. / 503 x 168 x 411 mm		
Net Weight	24.7 lbs. / 11.2 kg		
Shipping Dimensions (WxDxH)	23.3 x 10.2 x 19.3 in. / 591 x 259 x 591 mm		
Gross Weight	29.5 lbs. / 13.4 kg		
Fan Noise	40 dB normal / 31 dB eco	42 dB normal / 32 dB eco	
Regulations	US	USA UL60950-1: 2005+A1: 2009+A2: 2013, IEC 60825-1:2014 (Ed.3), FCC Part15 Subpart B(ANSI C63.4.2014)	
	Canada	CAN/CSA C22.2 No.62368-1-18,3rd Edition, ICES-003 Issue 7(ANSI C63.4-2014)	
Operating	Altitude	0 to 2600 m (8,500 ft)	
	Temperature	32-113°F / 0-45°C	
	Humidity	20 to 85% Humidity (Non-Condensing)	
Storage	Altitude	0-12,000m / 0-39,370ft (above sea level)	
	Temperature	14-122°F / -10 50°C	
	Humidity	20% - 80% (non-CONDENSING)	

* Lens does not ship with the projector. Additional accessories are available, including screens, carts, mount accessories and replacement cables. Visit <https://business.sharppusa.com/> for details.

Sharp, NaViSet and all related trademarks are trademarks or registered trademarks of Sharp Corporation and/or its affiliated companies. The terms HDMI, HDMI High-Definition Multimedia Interface, and the HDMI Logo are trademarks or registered trademarks of HDMI Licensing Administrator, Inc. Crestron, the Crestron logo, Crestron Connected, and XiO Cloud are either trademarks or registered trademarks of Crestron Electronics, Inc. in the United States and/or other countries. All other brand names and product names may be trademarks or registered trademarks of their respective owners. Design and specifications are subject to change without prior notice.



SHARP ELECTRONICS CORPORATION
100 Paragon Drive, Montvale, NJ 07645
1-800-BE-SHARP • www.sharppusa.com

©2025 Sharp Electronics Corporation. All rights reserved. Sharp is a registered trademark of Sharp Corporation and/or its affiliated companies. All other trademarks are the property of their respective owners.